

Training with the best techniques



Noptel

**sport II**

SHOOTER TRAINING SYSTEM

## Advantages

- Objective shooting skill analysis
- Accurate measurement
- Compact, light-weight and easy to use
- Universal attachment to fit all sports guns
- Easy zeroing system
- Real shooting distance from 3 to 50 m
- Biathlon, rapid fire and moving targets
- Multi-user operation
- Simultaneous live fire (up to .22 cal)

Since Sport II is compact and portable, you can train anywhere. By training at home you can save time and money and develop your shooting skill effectively at the same time. You can also gain a reliable picture of your technical progress. The Noptel ST-2000 Sport II is easy to take with you to competitions. It is simply the best sport shooter trainer ever made!



Juha Hirvi – silver medalist in the men's 50-metres rifle event at the Sydney Olympic Games 2000, says "Regular use of Noptel Sport has clearly given a boost to the effectiveness and quality of my training."



# The Best Shooter Trainer Ever

## **Noptel ST-2000 Sport II**

continues the heritage of Noptel's famous ST-2000 product family, originating in the early 1990's. While maintaining the excellent accuracy and reliability of its predecessors, Sport II is designed to be even more compact and user friendly for serious training. We have put our 20 years of experience into a superior package which makes sport shooting training easier and more efficient than ever.





*The Optical Unit can be clamped to any barrel by means of the Universal Adapter.*

## User friendly

Train anywhere and at any time. Sport II is quick to set up, since it has only two main parts: the Optical Unit and the RS-box containing the battery. A standard 9V battery allows more than 10.000 shots. You can concentrate entirely on shooting, while the Sport II automatically takes care of measuring the shots, handling the data and storing the results. It reveals the shooter's strong and weak points in an illustrative way.

## New structure

The transmitter and receiver are located vertically in the Optical Unit, which makes zeroing simple. The device is normally zeroed via the software, but if there is a need for hardware adjustment, simply turn the vertical screw on the bottom of the Sport II. The new double clapper clamp structure makes installation very easy and even allows attachment to tapered barrels.

## Compact

Sport II is the most compact sports shooter trainer ever built. Thanks to the new generation design of the Optical Unit, the overall size and weight of the equipment is considerably reduced. All electronics are integrated into the Optical Unit. Because the Universal Adapter is an integral part of the Optical Unit, the structure is mechanically firm and simple.



*All you need is here.*

## Training efficiency

Sport II measures and records the shooting process accurately and objectively. The shooter receives immediate feedback on the shot, making training very efficient. It is a fact that the sooner you can rid yourself of bad shooting habits, the better shooter you will eventually be. Faulty techniques can cost several years in your career.



*The PC shows the shot analysis.*

## Conventional targets

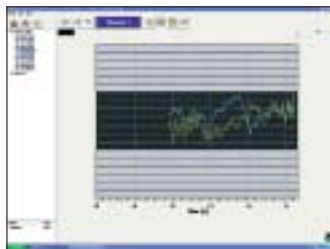
Sport II works with conventional shooting targets, which means that you can use your own target for training. The only difference is a small reflector attached to it for measurement purposes. No electric current or wiring is required in the target, and therefore you have a completely free choice for its placement. This also allows training with multiple and moving targets, and the use of the same target simultaneously by a number of shooters.



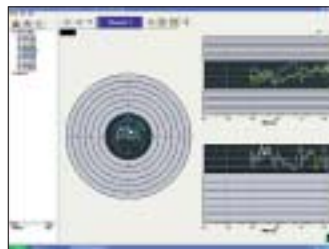
*The target needs no electricity or wiring.*



Several shooters can use the same computer and target simultaneously.



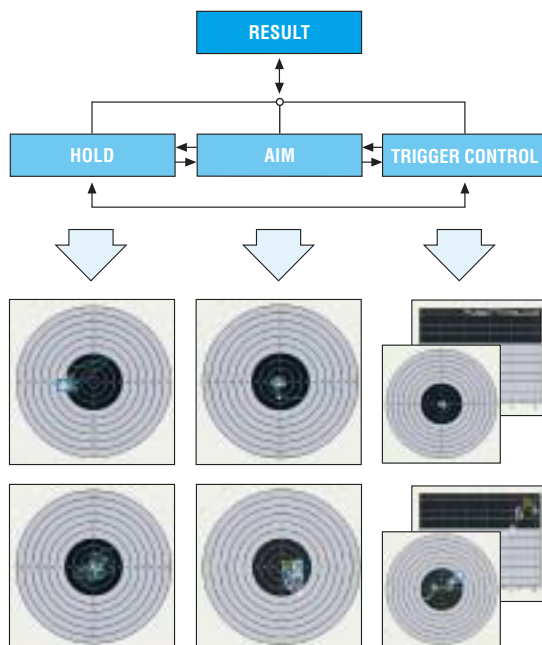
Shots can be displayed in different forms for simple and illustrative analysis.



## Analysis of results

Sport II provides the shooter with objective, accurate information concerning the whole shooting session. We have developed the shot model on the basis of theoretical work and many years' of scientific study of a massive body of shot data collected from hundreds of shooters at all levels of skill. The analysis provides a reliable description of the shooter's Hold, Aim and Trigger Control capabilities, which are the key factors in shooting.

The software illustrates these key factors both visually and numerically, revealing both the weaknesses and strengths of the shooter. The shooter quickly learns to analyse the shots reliably in detail immediately after shooting, which is the best way to improve one's skill. The numerical data make it possible to keep track of the shooter's development and compare shooters. All the analytical data can be printed out as well.



Hold, aim and trigger control are the three key factors, which characterise a shooter's performance.

### Typical technical specifications

Shooting distance 3–50 m  
Temperature range 0–50 °C

Accuracy (90% CEP) - 10 m / 0.3 mm  
- 50 m / 1.7 mm

Clamps to 12–45 mm barrels

Optical unit - weight 96 g  
- L/W/H 92/30/40 mm

Cable 1,6 m - weight 27 g

Power supply - standard 9V battery





**Noptel - Simply The Best**

Noptel Oy • Teknologiantie 2, FIN-90570 Oulu, Finland  
Tel. +358 8 551 4351 • Fax +358 8 556 4101 • info@noptel.fi  
**www.noptel.fi**