

Noptel software

NOS Sport User's Guide

Hardware Zeroing

Normally, it is not necessary to adjust the sight of the weapon. Vertical adjustments can be made using the screw in the bottom of the Optical Unit. The vertical adjustment can be locked using the locking screw. The Optical Unit has been adjusted horizontally in the factory, but further horizontal adjustment can be made if needed. See Online Help for more details.

Battery Replacement

The battery can be found only from the RS connection box but not from the USB box. Use the toolset to open the back cover of the box. Take out the old battery and replace it with a new one. See Online Help for more details.

- Battery type: 9 Volts, IEC: 6LR61/6F22 or 6AM6

Checklist

The package includes the following items:

- Optical Unit, Sport II
- Connection box, RS-100 or USB-100
- Connection cable
- Reflective targets for air pistol and air rifle (5 and 10 m)
- Software CD-rom, G-140
- Toolset

If something goes wrong

- Check that the Optical Unit is properly connected
- Check that the battery voltage is ok
- Consult the Online Help for further instructions.
- Contact Noptel Support by email: support1@noptel.fi

Contact information

Noptel Oy
Teknologiantie 2, 90570 Oulu, Finland
Tel. +358 8 551 4351, e-mail info@noptel.fi
www.noptel.fi

ST-2000 Sport II and NOS Sport software are products of Noptel Oy.
All rights reserved. Subject to change without notice.
Doc: N-40979.

Doc: ST-2000_Sport_II_User's_Guide

NOS Sport User's Guide



Noptel
sport II

SHOOTER TRAINING SYSTEM

1 Software Installation

When setup program starts, select option “Install NOS Sport”.



Follow the setup instructions. Usually just clicking “Next” is required. A program shortcut is created on the desktop.

2 Hardware

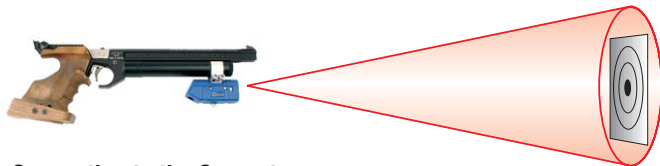
Mounting of the Optical Unit

Mount the Sport II Optical Unit on the barrel of the weapon. Use the toolset if necessary.



Setting the Target

Select the desired target and place it at the shooting distance. The shooting distance is marked on the corner of the target.



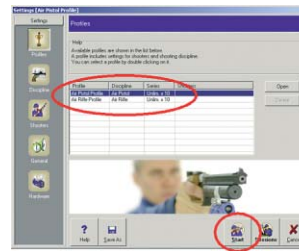
Connecting to the Computer

Connect the Optical Unit through the Connection Box to the PC serial- or USB-port depending on equipment at hand. The USB connection requires the driver (CD-Rom) which should be installed when requested.



3 Setups

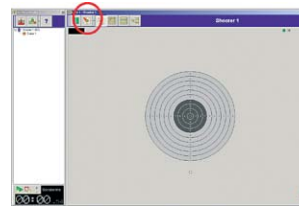
The program will start for the first time in the profile settings window. To select air pistol or air rifle shooting, double click the profile name. The selected profile will be shown in the caption. Click the **Start** button to start shooting session.



See [Online Help](#) for more information about other setups.

4 Software Zeroing

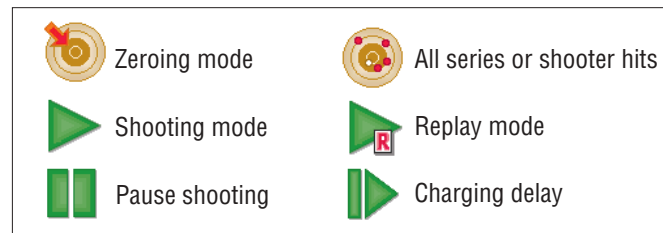
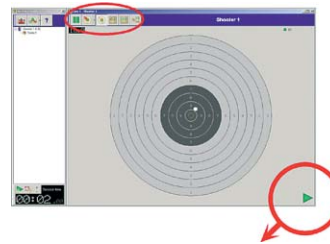
The first shot of the shooting session is for zeroing purposes. The zeroing point is the centre of the last seconds of the aiming curve. Zeroing can be repeated by clicking the **Zeroing** button on the toolbar.



See [Hardware Zeroing](#) for more information.

5 Shooting

After zeroing, the actual shooting can start. The icon in the bottom right corner shows that the shooting mode is on. The control buttons on the toolbar are **Zeroing**, **Pause** and **Help**. Clicking on a series will show hits in it, and clicking on a shot will replay it.

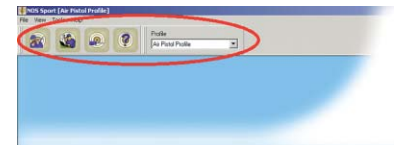


Toolbars

The Toolbar on the Shooter's Window has following buttons: Scoreboard, Analysis, Delete last shot & Replays

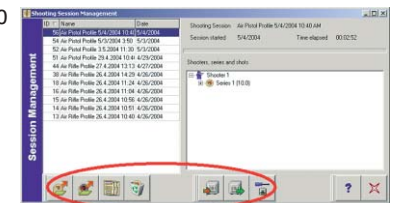


Toolbars on the Main Window is used to select desired actions: Shooting, Sessions, Setup, Help & Profile select



6 Sessions and Analysing

Sessions view is used to view previous sessions and analysis stored into the hard disk. Several reports can be created and printed here.



Control buttons are: Load & Delete session, Show Report & Help

7 Good to know

The Optical Unit sends invisible light beam to the target. The optical signal level indicator can be seen on shooter's window. Normally it should be green, when aiming at the target. If the indicator is red, then signal level is too high or there is no signal. If the indicator is yellow, then the signal is low.



If the signal level is too high or low when aiming at the target, check that shooting distance is correct.